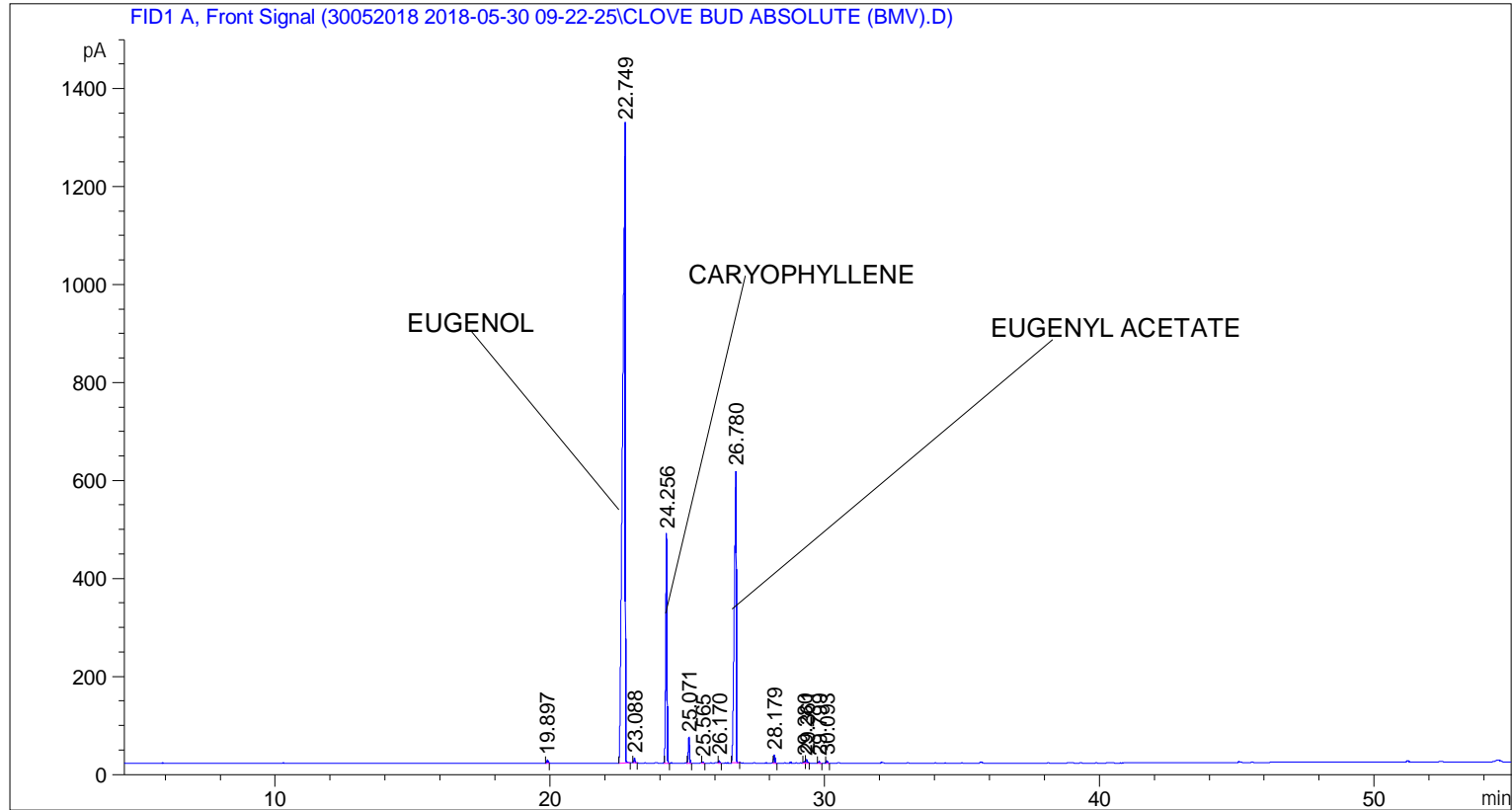


```

=====
Acq. Operator   : SYSTEM                               Seq. Line :    6
Acq. Instrument : BMV_NEW_GC_7820                     Location  : Vial 106
Injection Date  : 5/30/2018 3:14:10 PM                 Inj       :    1
                                                    Inj Volume: 0.5 µl

Acq. Method     : C:\CHEM32\2\DATA\30052018 2018-05-30 09-22-25\UNIVERSAL F.M
Last changed    : 5/30/2018 9:22:31 AM by SYSTEM
Analysis Method : C:\CHEM32\2\DATA\30052018 2018-05-30 09-22-25\UNIVERSAL F.M (Sequence
Method)
Last changed    : 6/1/2018 1:08:11 PM by SYSTEM
                  (modified after loading)
Additional Info  : Peak(s) manually integrated
  
```



=====
 Area Percent Report
 =====

```

Sorted By      :      Signal
Multiplier     :      1.0000
Dilution      :      1.0000
Do not use Multiplier & Dilution Factor with ISTDs
  
```

Signal 1: FID1 A, Front Signal

Peak #	RetTime [min]	Type	Width [min]	Area [pA*s]	Height [pA]	Area %
1	19.897	BB	0.0514	22.04668	6.52680	0.16311
2	22.749	BB	0.0838	8787.74023	1301.75208	65.01650
3	23.088	BB	0.0477	26.87531	9.04390	0.19884
4	24.256	BB	0.0505	1545.79456	468.62680	11.43663
5	25.071	BB	0.0477	167.11469	53.18178	1.23641
6	25.565	BB	0.0455	6.12372	2.07242	0.04531

Peak #	RetTime [min]	Type	Width [min]	Area [pA*s]	Height [pA]	Area %
7	26.170	BB	0.0469	14.24200	4.62446	0.10537
8	26.780	BB	0.0625	2830.79224	594.74030	20.94375
9	28.179	BB	0.0501	53.71702	16.89038	0.39743
10	29.280	BV	0.0529	9.06978	2.65068	0.06710
11	29.361	VB	0.0523	23.07613	6.67254	0.17073
12	29.799	BB	0.0548	12.22700	3.49515	0.09046
13	30.093	BB	0.0535	17.34986	4.99785	0.12836

Totals : 1.35162e4 2475.27513

=====
*** End of Report ***