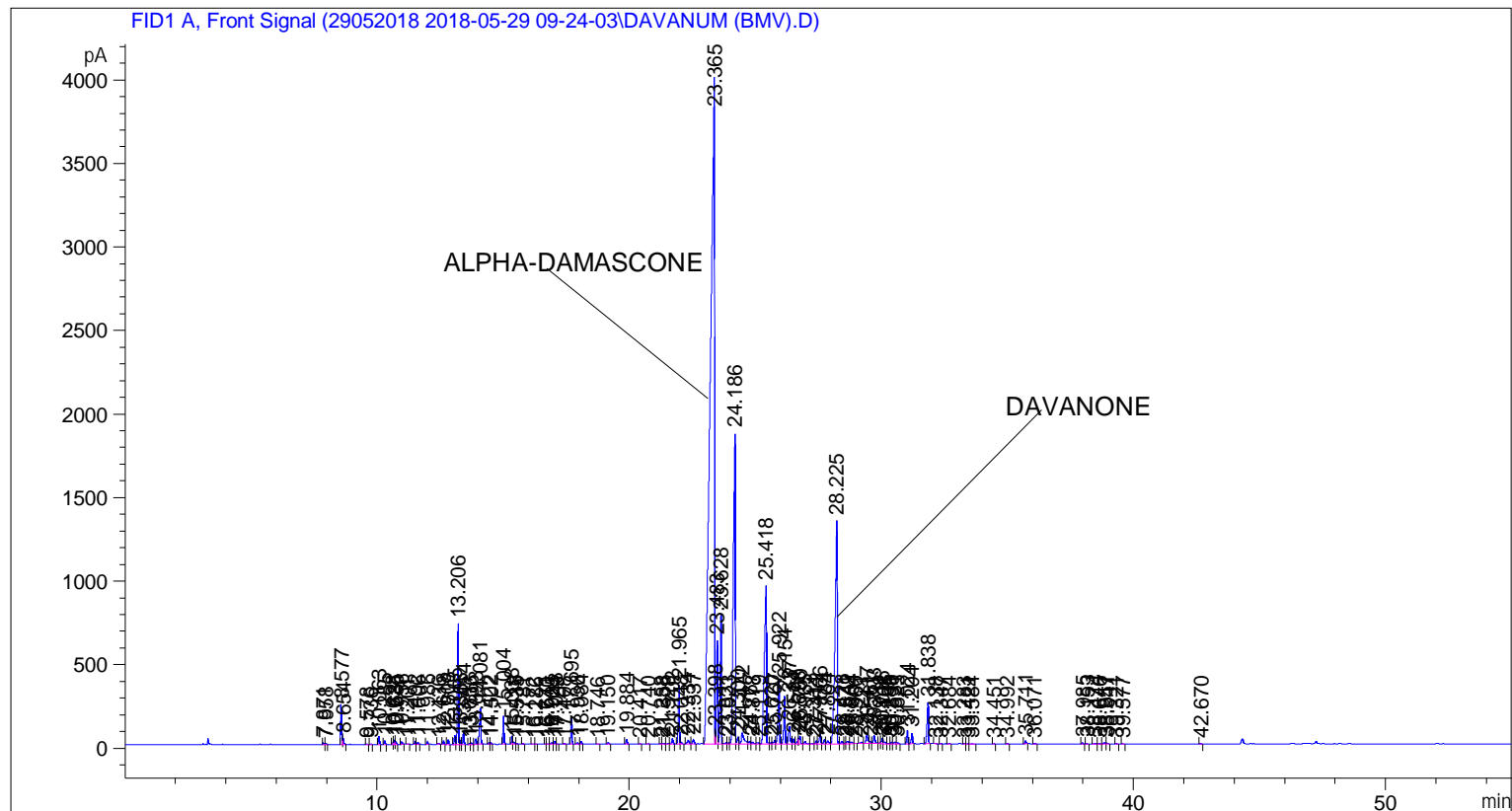


```

=====
Acq. Operator   : SYSTEM                               Seq. Line :    3
Acq. Instrument : BMV_NEW_GC_7820                     Location  : Vial 103
Injection Date  : 5/29/2018 11:54:09 AM                Inj       :    1
                                                    Inj Volume: 0.5 µl

Method          : C:\CHEM32\2\DATA\29052018 2018-05-29 09-24-03\UNIVERSAL F.M (Sequence
                Method)
Last changed    : 5/29/2018 9:24:08 AM by SYSTEM
Additional Info : Peak(s) manually integrated
  
```



=====
 Area Percent Report
 =====

```

Sorted By      : Signal
Multiplier     : 1.0000
Dilution       : 1.0000
Do not use Multiplier & Dilution Factor with ISTDs
  
```

Signal 1: FID1 A, Front Signal

Peak #	RetTime [min]	Type	Width [min]	Area [pA*s]	Height [pA]	Area %
1	7.871	BV	0.0373	19.79438	8.14982	0.02195
2	7.958	VB	0.0397	13.81378	5.25135	0.01532
3	8.577	BV	0.0399	615.61945	240.09747	0.68269
4	8.654	VB	0.0450	114.30183	37.07304	0.12675
5	9.578	BB	0.0415	12.55555	4.64306	0.01392
6	9.736	BB	0.0422	10.27397	3.71964	0.01139
7	10.063	BB	0.0415	126.41747	46.77934	0.14019
8	10.285	BB	0.0435	63.20772	22.70853	0.07009
9	10.628	BV	0.0368	34.27482	14.40281	0.03801

Sample Name: DAVANUM (BMV)

Peak #	RetTime [min]	Type	Width [min]	Area [pA*s]	Height [pA]	Area %
10	10.681	VV	0.0405	71.63392	26.53916	0.07944
11	10.735	VB	0.0437	45.69646	15.82440	0.05067
12	10.956	BB	0.0494	55.21545	15.56961	0.06123
13	11.201	BB	0.0542	12.19367	3.29125	0.01352
14	11.492	BV	0.0426	45.11447	16.67287	0.05003
15	11.606	VB	0.0450	34.63374	12.23846	0.03841
16	11.986	BB	0.0429	44.97053	16.46872	0.04987
17	12.436	BB	0.0443	18.83851	6.60118	0.02089
18	12.618	BB	0.0437	61.02971	21.77045	0.06768
19	12.808	BB	0.0443	82.84993	29.04893	0.09188
20	13.065	BV	0.0505	177.06226	55.03342	0.19635
21	13.206	VV	0.0486	2203.66333	722.42059	2.44375
22	13.303	VV	0.0419	68.95062	25.18893	0.07646
23	13.414	VB	0.0426	225.72984	83.27145	0.25032
24	13.653	BV	0.0437	21.13074	7.30966	0.02343
25	13.736	VB	0.0467	29.51904	9.63860	0.03274
26	13.893	BV	0.0616	126.73466	33.92834	0.14054
27	14.081	VB	0.0496	794.07574	217.72156	0.88059
28	14.422	BV	0.0422	20.95988	7.84427	0.02324
29	14.502	VB	0.0445	21.35492	7.67469	0.02368
30	15.004	BB	0.0429	472.43326	167.38710	0.52390
31	15.338	BV	0.0461	156.64378	52.13692	0.17371
32	15.418	VV	0.0518	41.61703	11.89338	0.04615
33	15.535	VB	0.0473	17.11074	5.49744	0.01897
34	15.781	BB	0.0445	12.79801	4.59429	0.01419
35	16.172	BB	0.0379	3.69795	1.60321	0.00410
36	16.286	BB	0.0400	8.23613	3.31091	0.00913
37	16.671	BV	0.0368	6.01043	2.61577	0.00667
38	16.740	VB	0.0435	5.52972	1.92825	0.00613
39	16.925	BV	0.0800	37.80391	7.47317	0.04192
40	17.048	VV	0.0519	68.12700	19.90281	0.07555
41	17.129	VB	0.0367	4.71800	2.06178	0.00523
42	17.408	BB	0.0499	18.65360	5.74287	0.02069
43	17.695	BB	0.0452	483.06937	164.76291	0.53570
44	17.936	BB	0.0537	24.78710	7.28910	0.02749
45	18.084	BB	0.0492	46.50535	14.58727	0.05157
46	18.746	BB	0.0474	6.11717	2.01745	0.00678
47	19.150	BB	0.0603	41.62817	10.04677	0.04616
48	19.884	BB	0.0504	97.39837	28.82231	0.10801
49	20.417	BB	0.0529	11.24399	3.20888	0.01247
50	20.740	BB	0.0652	14.95198	3.28045	0.01658
51	21.258	BV	0.0540	15.47076	4.40138	0.01716
52	21.338	VB	0.0570	24.28799	6.16321	0.02693
53	21.528	BV	0.0620	17.80475	4.33149	0.01974
54	21.702	VB	0.0564	118.57265	32.63518	0.13149
55	21.965	BV	0.0519	1177.54529	353.05170	1.30584
56	22.048	VB	0.0465	37.23688	11.89559	0.04129
57	22.334	BV	0.0782	117.31506	21.32542	0.13010
58	22.537	VB	0.0686	113.11581	24.63239	0.12544
59	23.365	BV	0.1419	4.61567e4	3962.24268	51.18536
60	23.398	VV	0.0235	111.51293	70.47868	0.12366
61	23.483	VV	0.0414	1665.14429	618.90485	1.84656
62	23.628	VV	0.0486	2554.15771	770.99200	2.83243
63	23.831	VV	0.0714	46.36929	8.94960	0.05142

Sample Name: DAVANUM (BMV)

Peak #	RetTime [min]	Type	Width [min]	Area [pA*s]	Height [pA]	Area %
64	23.923	VV	0.0535	26.03991	7.14381	0.02888
65	24.186	VV	0.0696	1.01546e4	1862.42896	11.26094
66	24.300	VV	0.0595	158.56271	41.52411	0.17584
67	24.472	VV	0.0997	507.98206	66.78515	0.56333
68	24.767	VV	0.0605	76.12974	18.70687	0.08442
69	24.878	VV	0.0814	72.70245	12.77214	0.08062
70	25.119	VV	0.0809	53.53266	8.93145	0.05936
71	25.418	VV	0.0744	5315.76465	947.78430	5.89490
72	25.620	VV	0.0596	43.97250	10.56417	0.04876
73	25.767	VV	0.0675	109.47133	23.87835	0.12140
74	25.922	VV	0.0558	1419.74121	386.68228	1.57442
75	26.154	VV	0.0540	1036.92932	288.20749	1.14990
76	26.337	VV	0.0739	498.05048	103.93550	0.55231
77	26.514	VV	0.0624	120.72901	29.11872	0.13388
78	26.698	VV	0.0588	137.30118	33.47901	0.15226
79	26.760	VV	0.0595	180.17529	45.17956	0.19980
80	26.965	VV	0.0657	69.59621	14.83908	0.07718
81	27.314	VV	0.0775	29.67171	5.20691	0.03290
82	27.412	VV	0.0573	71.58278	18.01812	0.07938
83	27.566	VV	0.0644	268.96976	61.04401	0.29827
84	27.734	VV	0.0633	107.52306	24.47538	0.11924
85	27.864	VV	0.0807	94.32887	16.74919	0.10461
86	28.225	VV	0.0766	7720.10986	1333.16614	8.56119
87	28.428	VV	0.0679	63.17411	14.20145	0.07006
88	28.571	VV	0.0420	20.50527	7.25886	0.02274
89	28.642	VV	0.0765	80.63282	14.36082	0.08942
90	28.804	VV	0.0781	67.05300	11.65456	0.07436
91	28.960	VB	0.0244	1.70438	1.37641	0.00189
92	29.221	BV	0.0697	43.37398	8.93137	0.04810
93	29.417	VV	0.0692	303.12576	60.74208	0.33615
94	29.561	VV	0.0576	52.67900	13.78018	0.05842
95	29.703	VV	0.0672	229.71016	49.44938	0.25474
96	29.942	VV	0.0544	39.35986	10.83931	0.04365
97	30.026	VV	0.0527	112.30833	32.98235	0.12454
98	30.108	VV	0.0704	58.19948	10.88727	0.06454
99	30.285	VV	0.0566	12.12333	3.32086	0.01344
100	30.390	VV	0.0491	32.41438	10.19425	0.03595
101	30.531	VV	0.0684	56.99488	10.65038	0.06320
102	30.625	VB	0.0548	28.62519	7.80352	0.03174
103	31.024	BV	0.0518	265.00992	79.67958	0.29388
104	31.204	VB	0.0538	218.64444	62.53181	0.24247
105	31.838	BB	0.0583	919.87628	247.95963	1.02009
106	32.138	BB	0.0518	11.86298	3.39274	0.01316
107	32.347	BB	0.0503	12.21663	3.81825	0.01355
108	32.684	BB	0.0633	15.49791	3.74499	0.01719
109	33.283	BV	0.0501	12.57201	3.85443	0.01394
110	33.421	VV	0.0597	16.25396	3.81503	0.01802
111	33.584	VB	0.0257	2.21299	2.03502	0.00245
112	34.451	BB	0.0445	8.54201	2.97599	0.00947
113	34.992	BB	0.0485	14.35911	4.46409	0.01592
114	35.711	BB	0.0528	62.34048	17.84506	0.06913
115	36.071	BB	0.0569	17.99373	5.01452	0.01995
116	37.985	BB	0.0523	29.89786	8.88552	0.03316
117	38.153	BB	0.0528	21.70512	6.36657	0.02407

Peak #	RetTime [min]	Type	Width [min]	Area [pA*s]	Height [pA]	Area %
118	38.474	BV	0.0653	29.80921	6.52234	0.03306
119	38.646	VV	0.0680	24.37009	5.26297	0.02703
120	38.857	VV	0.0586	36.64043	9.17970	0.04063
121	38.941	VB	0.0691	30.89012	6.19962	0.03426
122	39.321	BB	0.0597	19.79150	5.04933	0.02195
123	39.577	BB	0.0508	7.66845	2.24532	0.00850
124	42.670	BB	0.0542	16.05283	4.65615	0.01780

Totals : 9.01756e4 1.42516e4

=====
*** End of Report ***