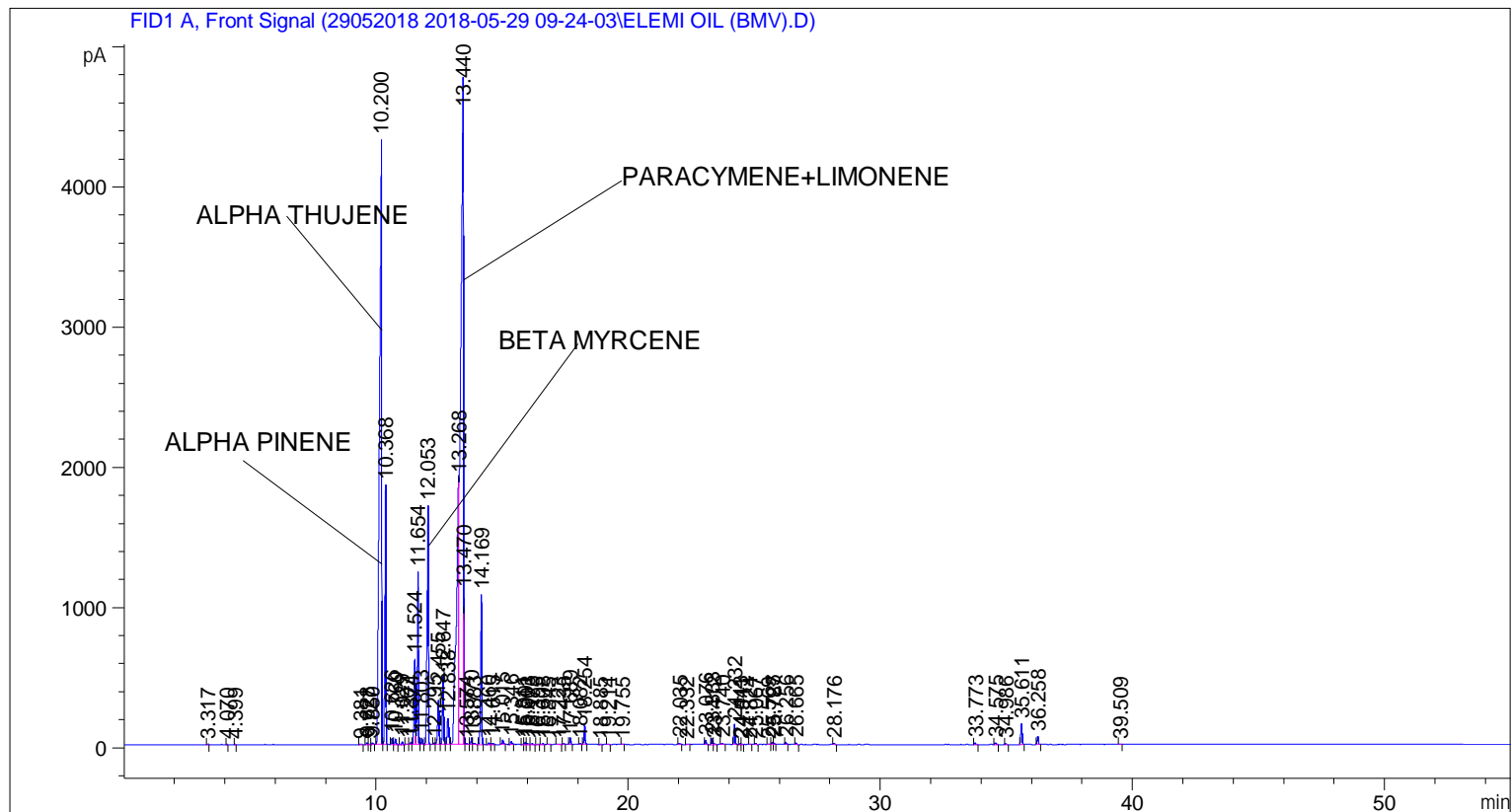


```
=====
Acq. Operator   : SYSTEM                               Seq. Line :    4
Acq. Instrument : BMV_NEW_GC_7820                     Location  : Vial 104
Injection Date  : 5/29/2018 1:01:45 PM                Inj       :    1
                                                    Inj Volume: 0.5 µl

Method          : C:\CHEM32\2\DATA\29052018 2018-05-29 09-24-03\UNIVERSAL F.M (Sequence
                Method)
Last changed    : 5/29/2018 9:24:08 AM by SYSTEM
=====
```



=====
 Area Percent Report
 =====

```
Sorted By      : Signal
Multiplier     : 1.0000
Dilution       : 1.0000
Do not use Multiplier & Dilution Factor with ISTDs
```

Signal 1: FID1 A, Front Signal

Peak #	RetTime [min]	Type	Width [min]	Area [pA*s]	Height [pA]	Area %
1	3.317	BB	0.0283	9.99528	5.01503	0.00971
2	4.070	BB	0.0235	5.94355	3.95149	0.00578
3	4.399	BB	0.0247	2.43454	1.51729	0.00237
4	9.381	BB	0.0594	20.21585	4.97357	0.01965
5	9.628	BV	0.0504	39.52736	12.33215	0.03842
6	9.727	VV	0.0487	6.23271	1.98399	0.00606
7	9.850	VB	0.0550	34.30563	10.00898	0.03334
8	10.200	BV	0.0743	2.52550e4	4313.58350	24.54568
9	10.368	VB	0.0430	5397.00098	1849.56641	5.24542
10	10.626	BV	0.0391	116.98663	46.85295	0.11370

Sample Name: ELEMI OIL (BMV)

Peak #	RetTime [min]	Type	Width [min]	Area [pA*s]	Height [pA]	Area %
11	10.760	VB	0.0433	106.63332	37.37808	0.10364
12	11.029	BB	0.0479	60.94191	19.81648	0.05923
13	11.207	BB	0.0492	16.38261	5.13393	0.01592
14	11.374	BV	0.0566	53.74327	15.08948	0.05223
15	11.524	VV	0.0624	2327.71094	611.47095	2.26233
16	11.654	VB	0.0470	3793.54956	1229.80920	3.68700
17	11.803	BB	0.0467	146.65857	47.98818	0.14254
18	12.053	BB	0.0533	6481.65576	1705.27625	6.29961
19	12.295	BV	0.0448	27.12116	9.37382	0.02636
20	12.455	VV	0.0586	1179.92542	315.80475	1.14679
21	12.647	VB	0.0498	1529.97021	484.41037	1.48700
22	12.838	BV	0.0714	877.79236	188.13071	0.85314
23	13.268	VV	0.1000	1.43148e4	1898.00195	13.91276
24	13.440	VV	0.0871	3.31492e4	4770.43213	32.21811
25	13.470	VB	0.0203	1419.40894	1084.29089	1.37954
26	13.574	BB	0.0412	16.81906	6.28339	0.01635
27	13.770	BV	0.0421	125.49308	47.09838	0.12197
28	13.883	VB	0.0463	25.67151	8.25204	0.02495
29	14.169	BB	0.0483	3505.65405	1066.92224	3.40719
30	14.460	BV	0.0605	45.48834	11.40736	0.04421
31	14.615	VB	0.0481	30.22996	9.50164	0.02938
32	15.015	BB	0.0481	105.98840	33.29807	0.10301
33	15.346	BB	0.0541	75.76424	20.50725	0.07364
34	15.811	BV	0.0472	14.31163	4.74261	0.01391
35	15.901	VV	0.0449	47.01731	16.16220	0.04570
36	16.003	VB	0.0692	28.10680	5.53771	0.02732
37	16.175	BB	0.0484	24.59377	7.66303	0.02390
38	16.395	BB	0.0692	19.76310	3.89155	0.01921
39	16.608	BB	0.0589	32.69334	7.96564	0.03178
40	16.845	BB	0.0555	10.21858	2.73755	0.00993
41	17.223	BB	0.0856	19.72597	3.40671	0.01917
42	17.435	BB	0.0501	23.25935	7.11310	0.02261
43	17.689	BB	0.0454	133.44299	46.61397	0.12970
44	18.082	BB	0.0397	16.54985	6.49582	0.01609
45	18.254	BB	0.0456	412.07642	143.08710	0.40050
46	18.885	BB	0.0456	7.65031	2.50536	0.00744
47	19.214	BB	0.0475	5.35168	1.80851	0.00520
48	19.755	BB	0.0486	9.32341	2.97088	0.00906
49	22.035	BB	0.0469	31.91054	10.37568	0.03101
50	22.332	BB	0.0576	13.21808	3.45936	0.01285
51	23.076	BB	0.0500	86.90556	27.43467	0.08446
52	23.333	BV	0.0487	127.57872	40.57189	0.12400
53	23.412	VB	0.0622	21.99907	5.01579	0.02138
54	23.740	BB	0.0599	33.73337	8.96712	0.03279
55	24.232	BB	0.0499	456.55792	144.16515	0.44373
56	24.443	BV	0.0492	16.55598	5.19535	0.01609
57	24.511	VB	0.0454	10.68548	3.52032	0.01039
58	24.824	BB	0.0423	7.28482	2.71118	0.00708
59	25.067	BB	0.0485	21.75266	7.14393	0.02114
60	25.569	BB	0.0434	6.43323	2.31500	0.00625
61	25.725	BV	0.0486	51.89564	16.53938	0.05044
62	25.787	VB	0.0447	30.05161	10.09517	0.02921
63	26.256	BB	0.0468	40.17663	13.47775	0.03905
64	26.665	BB	0.0490	30.84624	9.72653	0.02998

Peak #	RetTime [min]	Type	Width [min]	Area [pA*s]	Height [pA]	Area %
65	28.176	BB	0.0541	20.23774	5.75116	0.01967
66	33.773	BB	0.0551	35.26512	10.01661	0.03427
67	34.575	BB	0.0616	40.20715	9.84732	0.03908
68	34.986	BB	0.0518	21.06212	6.49749	0.02047
69	35.611	BB	0.0514	480.53192	145.99228	0.46704
70	36.258	BB	0.0519	182.53490	54.80881	0.17741
71	39.509	BB	0.0533	14.09607	3.98243	0.01370

Totals : 1.02890e5 2.06858e4

=====
*** End of Report ***