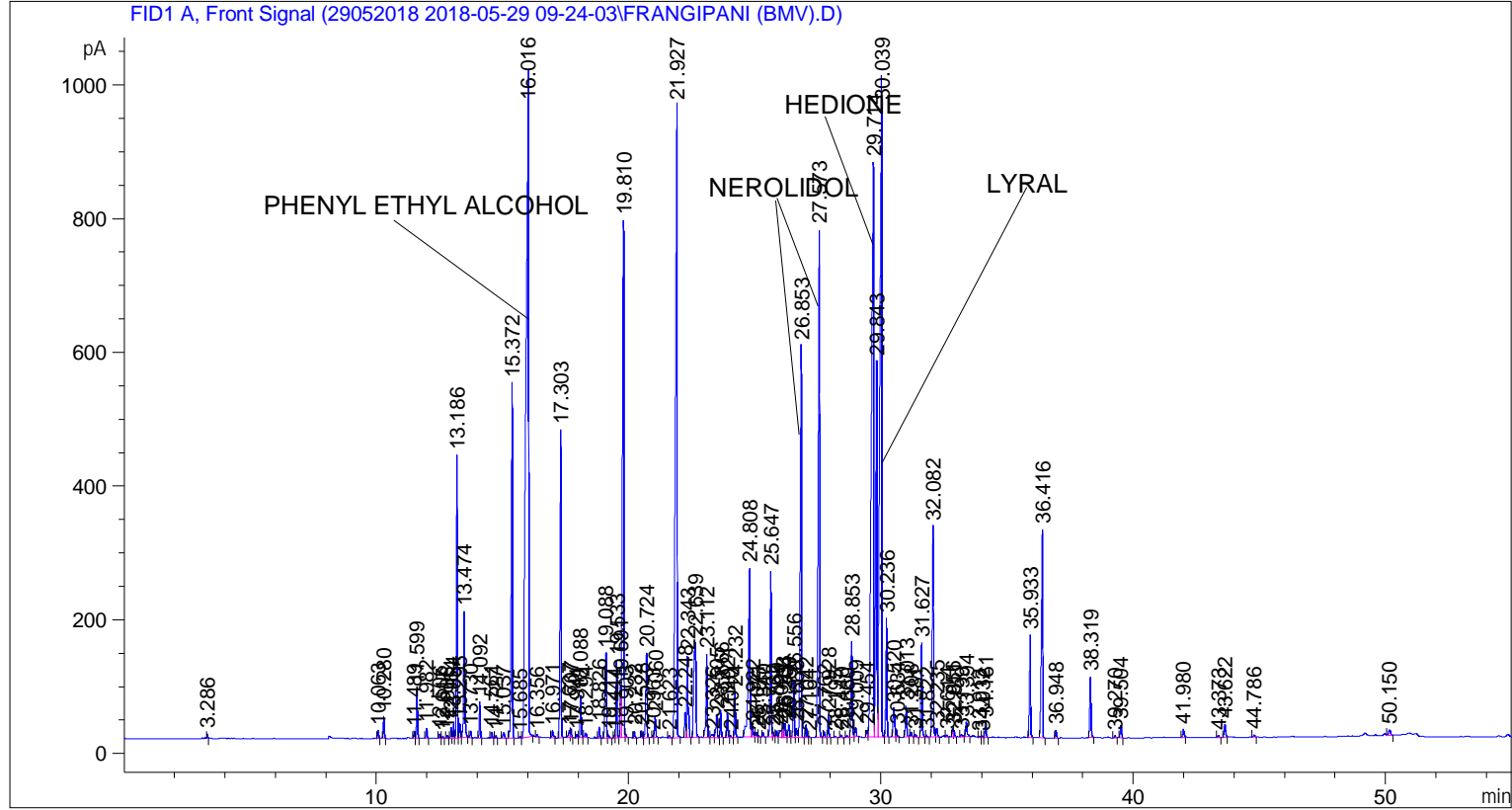


```
=====
Acq. Operator   : SYSTEM                               Seq. Line :    5
Acq. Instrument : BMV_NEW_GC_7820                     Location  : Vial 105
Injection Date  : 5/29/2018 2:09:46 PM                 Inj       :    1
                                                    Inj Volume: 0.5 µl
Method         : C:\CHEM32\2\DATA\29052018 2018-05-29 09-24-03\UNIVERSAL F.M (Sequence
                Method)
Last changed   : 5/29/2018 9:24:08 AM by SYSTEM
=====
```



=====  
 Area Percent Report  
 =====

```
Sorted By      : Signal
Multiplier     : 1.0000
Dilution       : 1.0000
Do not use Multiplier & Dilution Factor with ISTDs
```

Signal 1: FID1 A, Front Signal

Peak #	RetTime [min]	Type	Width [min]	Area [pA*s]	Height [pA]	Area %
1	3.286	BB	0.0281	13.41404	7.09246	0.02569
2	10.063	BB	0.0418	31.91823	11.69654	0.06112
3	10.280	BB	0.0422	93.76054	33.95772	0.17955
4	11.489	BV	0.0425	27.54645	10.19385	0.05275
5	11.599	VB	0.0437	206.21133	73.52803	0.39489
6	11.982	BB	0.0436	42.97094	14.92792	0.08229
7	12.506	BB	0.0453	19.71139	6.70986	0.03775
8	12.617	BB	0.0427	7.84358	2.88936	0.01502
9	12.806	BB	0.0433	14.21127	5.13701	0.02721
10	12.954	BV	0.0438	46.34959	16.50800	0.08876

Sample Name: FRANGIPANI (BMV)

Peak #	RetTime [min]	Type	Width [min]	Area [pA*s]	Height [pA]	Area %
11	13.054	VV	0.0439	60.48407	21.45194	0.11582
12	13.186	VV	0.0437	1185.21106	422.75461	2.26963
13	13.295	VV	0.0435	59.13482	21.19598	0.11324
14	13.474	VB	0.0546	673.15808	188.57295	1.28907
15	13.730	BB	0.0456	27.17040	9.42486	0.05203
16	14.092	BB	0.0430	149.08197	54.28529	0.28549
17	14.561	BB	0.0453	28.34880	9.63455	0.05429
18	14.727	BB	0.0453	10.66502	3.52570	0.02042
19	15.037	BB	0.0583	33.33336	8.05927	0.06383
20	15.372	BB	0.0532	1826.27234	530.44305	3.49723
21	15.685	BB	0.0429	8.25925	3.01948	0.01582
22	16.016	BB	0.0902	7217.25586	1000.01971	13.82073
23	16.356	BB	0.0445	10.01210	3.59206	0.01917
24	16.971	BB	0.0541	41.84282	11.31943	0.08013
25	17.303	BB	0.0542	1509.80505	460.98770	2.89121
26	17.637	BV	0.0677	46.05067	10.39915	0.08818
27	17.707	VB	0.0445	37.42573	13.03777	0.07167
28	17.941	BV	0.0462	15.28821	5.06925	0.02928
29	18.088	VB	0.0463	182.87311	62.15150	0.35019
30	18.294	BB	0.0564	24.28321	6.68441	0.04650
31	18.826	BB	0.0470	52.05647	16.87084	0.09969
32	19.088	BV	0.0717	551.85962	126.90842	1.05679
33	19.217	VB	0.0560	17.80971	4.61707	0.03410
34	19.444	BV	0.0415	10.05172	3.84505	0.01925
35	19.533	VB	0.0473	336.61792	114.65915	0.64461
36	19.691	BV	0.0409	203.93159	77.11848	0.39052
37	19.810	VV	0.0690	3319.24268	774.52039	6.35620
38	19.903	VB	0.0432	17.05008	5.65407	0.03265
39	20.232	BB	0.0470	32.28954	10.47797	0.06183
40	20.528	BV	0.0437	29.27456	10.44418	0.05606
41	20.724	VB	0.0560	456.56174	126.93085	0.87430
42	20.963	BV	0.0415	7.12482	2.72515	0.01364
43	21.060	VB	0.0556	106.66897	29.92753	0.20427
44	21.623	BB	0.0599	14.85958	3.69613	0.02846
45	21.927	BB	0.0642	4571.79688	949.52356	8.75479
46	22.248	BV	0.0470	111.74111	37.28188	0.21398
47	22.343	VB	0.0555	453.43463	121.74426	0.86831
48	22.639	BB	0.0753	850.30603	143.11563	1.62830
49	23.112	BB	0.0571	460.80716	124.72534	0.88243
50	23.326	BV	0.0958	30.41236	4.74564	0.05824
51	23.505	VB	0.0550	128.24811	34.78659	0.24559
52	23.666	BB	0.0464	122.05804	41.38342	0.23374
53	23.921	BV	0.0474	110.07568	36.23949	0.21079
54	24.040	VB	0.0506	10.56544	3.19318	0.02023
55	24.232	BB	0.0482	209.33728	67.54734	0.40087
56	24.808	BV	0.0663	1196.90283	252.48772	2.29202
57	24.922	VV	0.0689	71.70359	15.52443	0.13731
58	25.071	VV	0.0575	27.03282	7.08053	0.05177
59	25.155	VB	0.0396	5.24095	2.13657	0.01004
60	25.340	BB	0.0505	23.30694	7.25370	0.04463
61	25.647	BV	0.0488	782.05029	247.89146	1.49759
62	25.732	VB	0.0487	25.05100	7.76072	0.04797
63	25.869	BV	0.0514	33.98138	10.32064	0.06507
64	26.021	VV	0.0811	66.63755	10.94065	0.12761

Sample Name: FRANGIPANI (BMV)

Peak #	RetTime [min]	Type	Width [min]	Area [pA*s]	Height [pA]	Area %
65	26.133	VV	0.0526	73.25966	20.06771	0.14029
66	26.204	VV	0.0569	78.32243	20.82649	0.14998
67	26.360	VV	0.0522	64.59256	18.75794	0.12369
68	26.556	VV	0.0501	266.53790	83.79151	0.51041
69	26.666	VV	0.0530	49.76434	14.14872	0.09530
70	26.853	VB	0.0540	2112.86743	586.89209	4.04605
71	27.042	BB	0.0486	59.36138	19.47895	0.11367
72	27.164	BB	0.0515	5.84818	1.92231	0.01120
73	27.573	BB	0.0576	3035.83813	760.79132	5.81350
74	27.762	BB	0.0501	28.86404	9.07198	0.05527
75	27.928	BB	0.0453	100.03831	34.00226	0.19157
76	28.195	BB	0.0572	8.73879	2.25685	0.01673
77	28.440	BB	0.0480	12.54085	4.18130	0.02402
78	28.660	BB	0.0550	11.03249	3.14224	0.02113
79	28.853	BV	0.0531	502.64532	142.60802	0.96254
80	29.009	VB	0.0695	62.01205	13.78676	0.11875
81	29.454	BV	0.0541	39.99347	11.34091	0.07659
82	29.714	VV	0.0809	5228.81543	859.99481	10.01295
83	29.843	VV	0.0500	1977.00452	561.98651	3.78588
84	30.039	VV	0.0689	5235.71338	986.98529	10.02616
85	30.236	VB	0.0498	545.41260	177.79692	1.04444
86	30.520	BV	0.0633	192.92693	43.88334	0.36945
87	30.634	VB	0.0455	31.82873	11.09574	0.06095
88	31.013	BB	0.0514	153.26414	46.52054	0.29349
89	31.208	BB	0.0501	24.44729	7.29860	0.04682
90	31.381	BB	0.0661	18.85821	4.22614	0.03611
91	31.627	BB	0.0490	446.98044	141.01440	0.85595
92	31.822	BB	0.0457	9.38816	3.34849	0.01798
93	32.082	BV	0.0518	1076.33582	315.18741	2.06114
94	32.235	VB	0.0556	46.60425	13.07869	0.08925
95	32.614	BB	0.0385	5.32055	2.52997	0.01019
96	32.856	BV	0.0458	38.92506	12.68072	0.07454
97	32.911	VB	0.0439	29.14106	10.03881	0.05580
98	33.199	BB	0.0637	15.51538	3.64465	0.02971
99	33.394	BB	0.0581	86.94004	22.01967	0.16649
100	33.913	BV	0.0482	6.65765	2.20944	0.01275
101	34.032	VV	0.0507	7.78483	2.47758	0.01491
102	34.161	VB	0.0537	72.91425	21.43790	0.13963
103	35.933	BB	0.0504	518.47693	153.53343	0.99286
104	36.416	BB	0.0551	1207.45947	312.28674	2.31223
105	36.948	BB	0.0520	38.79103	11.60711	0.07428
106	38.319	BB	0.0530	317.54962	90.44982	0.60809
107	39.270	BB	0.0534	10.82441	3.20136	0.02073
108	39.504	BB	0.0556	69.81532	19.59841	0.13369
109	41.980	BB	0.0609	48.32560	12.55818	0.09254
110	43.373	BB	0.0553	11.57491	3.27235	0.02217
111	43.622	BB	0.0651	80.72809	19.18023	0.15459
112	44.786	BB	0.0629	13.81799	3.36859	0.02646
113	50.150	BB	0.0789	44.14400	7.93617	0.08453

Totals : 5.22205e4 1.20959e4

=====